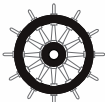


JFE-680

Echo sounder



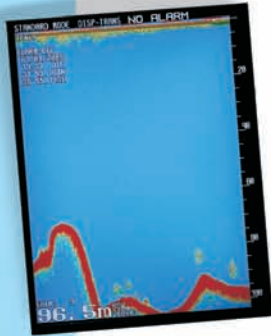
– a well developed colour echo sounder displays sub aqua conditions with startling effectiveness

- 10.4–inch high visibility display**
- Memorises last 24 hours of depth data**
- Integrated printer**
- Highly accurate and reliable read-out**
- Designed according to latest IMO regulations**

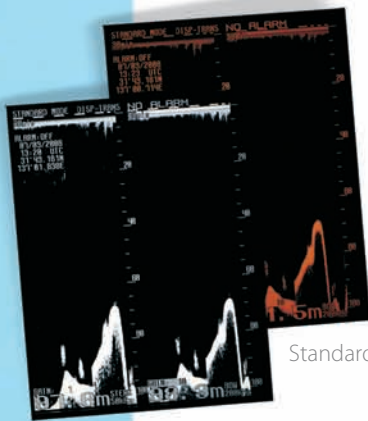
JFE-680 echo sounder – performance features

Unique features

- The powerfully built, all-in-one JFE-680 echo sounder integrates advanced depth data technology, displaying sub aqua conditions with startling effectiveness.



Standard mode



Standard mode

Display modes

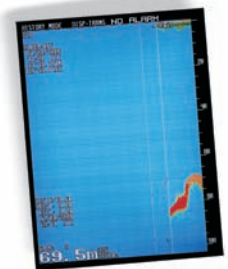
JRC's new standard in navigation echo sounding incorporates a 10.4-inch high visibility colour display. The innovative display modes allows you to select and view echoes in 8 colours or 8 levels of monochrome. The all-in-one JFE-680 echo sounder has a system-integrated thermal printer, providing the ship's log with valuable printouts if required.

Depth data management

The enhanced depth data technology has three central presentation modes, standard, history and docking. Both standard and docking mode provide a wide range of information. This is stored in the memory for up to 24-hours. The history mode allows you to retrieve all memorised depth data to provide complete feedback.



Docking mode



History mode

JRC StarNetwork™

JRC has been providing sales and support of products since 1915. Today, JRC offers comprehensive assistance through its organisation, in partnership with a worldwide StarNetwork™ of over 270 fully trained and qualified partners and agents, assisting you 24 hours a day, 7 days a week and 365 days a year.



JRC one-call™

One number to call

With JRC you can go anywhere and if you need our support, simply call us at +81 3 3492 9201, anytime.

JFE-680

Echo sounder – dedicated one-screen

JFE-680 echo sounder

– dimensions and weights

Flexible installation

The JFE-680 can be easily installed thanks to the integrated connection box and printer. The echo sounder can be used with one or two transducers, 50 kHz and 200 kHz, allowing you to operate both frequencies independently or simultaneously, or allows you to have a separate bow-stern depth read-out.

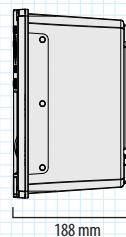
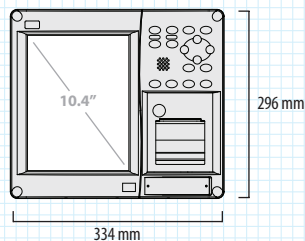
Unified design

The display design allows you to carry out all operations simply by using the unified keyboard layout. The keyboard is solid and responsive, which allows for precise operation.



Dimension drawings - Display

JFE-680
Weight 8 kg

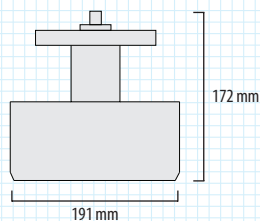


cutout for panel mount height 306 mm, width 344 mm, depth 340 mm

Dimension drawings - Transducer, Matching box

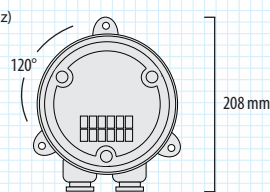
NKF-345 (50 kHz)
Weight 20 kg

NKF-341 (200 kHz)
Weight 22 kg



AW-154F-50 (50 kHz)
Weight 4 kg

AW-154F (200 kHz)
Weight 4 kg



What's standard in the box?

1. Display¹
2. Transducer²
3. Matching box²
4. Cable
5. Spare parts
6. Manual

Which cable?

Transducer to matching box³ 20 m

¹ integrated connection box and printer, excluding bracket

² dual frequency or bow-stern possible, depends on configuration (50 kHz and/or 200 kHz)

³ attached to transducer

JFE-680 echo sounder

– specifications

Model		JFE-680
IMO compliant		✓
General		
	Display	10.4-inch, colour LCD, 480 by 640 pixels
	Frequency	200 kHz, 50 kHz
	Output power	200 kHz: 1 kW, 50 kHz: 500 W
	Echo colour	8 colours or 8 levels monochrome
	Digital depth	4 digits (0.1 m)
	Range	10, 20, 50, 100, 200, 500, 800 m
	Depth accuracy	±2.5%
	Minumum sounding depth	1 m (200 kHz), 2 m (50 kHz)
	Draft adjust	50 m in 0.1 m steps
	TX pulse repetition rate	171 PRR (10, 20, 50 m), 68 PRR (100, 200 m), 43 PRR (500, 800 m)
	Presentation mode	standard, history, docking
	Time range of echo display	5, 10, 20, 30 min
	Auto function	gain, range
	Alarm function	depth (shallow depth), power failure, system error
	Preview function	24 hrs memory
Image printer	built-in	
Interfaces		
	NMEA version	1.5, 2.3
	NMEA input	JRC, RMA, RMC, GLL, VTG, ZDA, GGA, ACK
	NMEA output	version 1.5 DBS, DBT, DBK, version 2.3 JRC, ALR, DPT
	Printer in/out	RS232C
Power supply		
	DC	24V DC +30% -10% (for power fail alarm only)
	AC	100-115V to 200-230V AC ±15%, 50/60 Hz ±5%
	Power consumption	≤50 W
Environmental conditions		
	Operating temperature	-15° to 55°C
	Storage temperature	-25° to 75°C
	Humidity	0% to 93% non-condensing
	Water resistance	IPX2
Optional items		
Flush mount		BRBX05351
Table mount		BRBX05340
Remote display (4-inch)		NWW-58
Junction box (for remote display)		CQD-10
Dimmer unit (for remote display)		NCM-227D
Output buffer		NQA-602DC

All specifications are subject to change without notification.

For further information please contact:



Japan Radio Co., Ltd.

JRC

Cessnalaan 40-42

1119 NL, Schiphol-Rijk, The Netherlands

T +31 20 6 580 750

F +31 20 6 580 755

E sales@jrceurope.com

W www.jrceurope.com

NAVTEAM

Professional Marine Electronics

NAVTEAM A/S

Norgesvej 7 - DK-5700 Svendborg - Denmark

Phone: + 45 63 21 80 80 - Fax + 45 63 21 80 81

sales@navteam.com

www.navteam.com